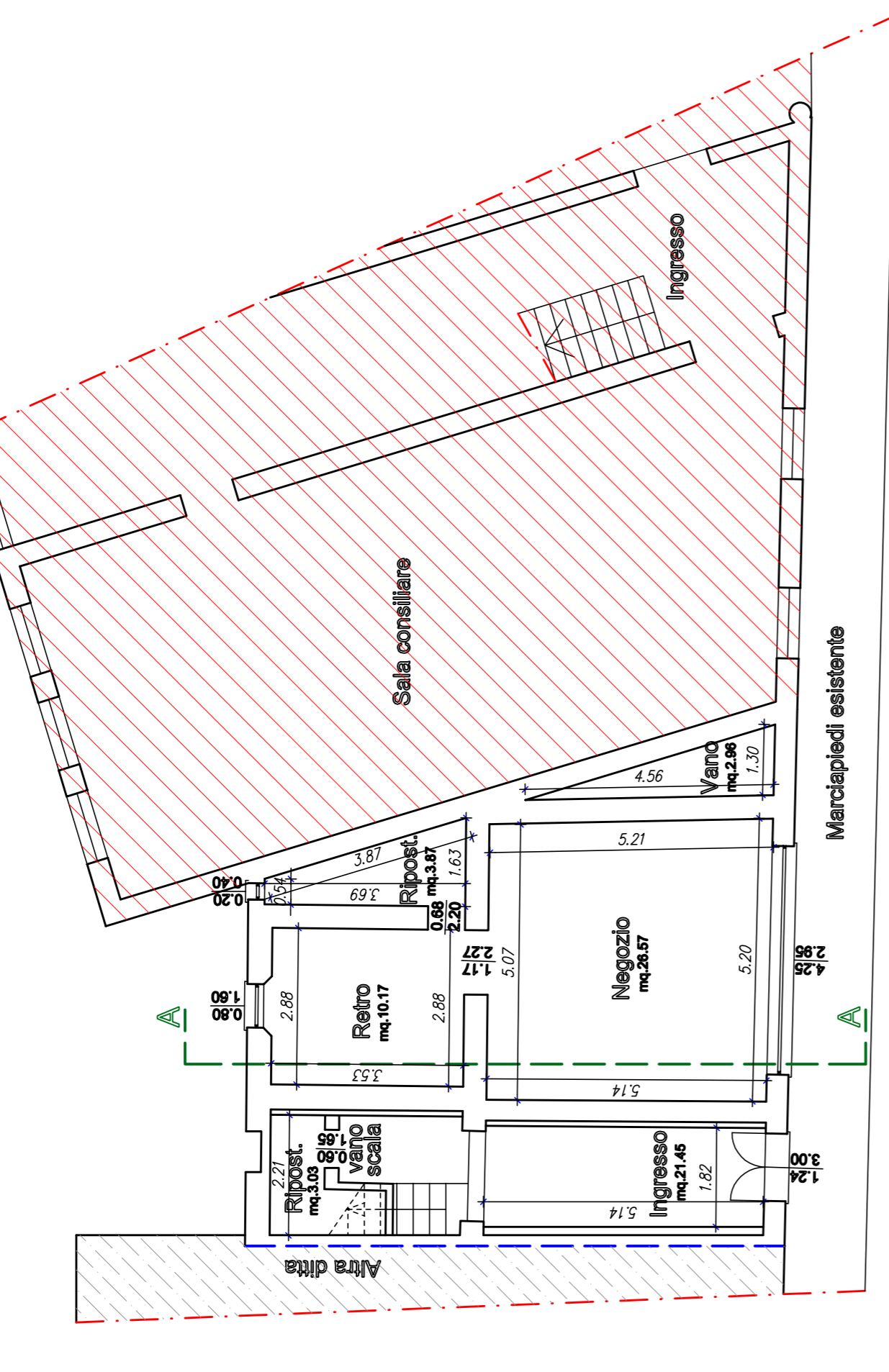


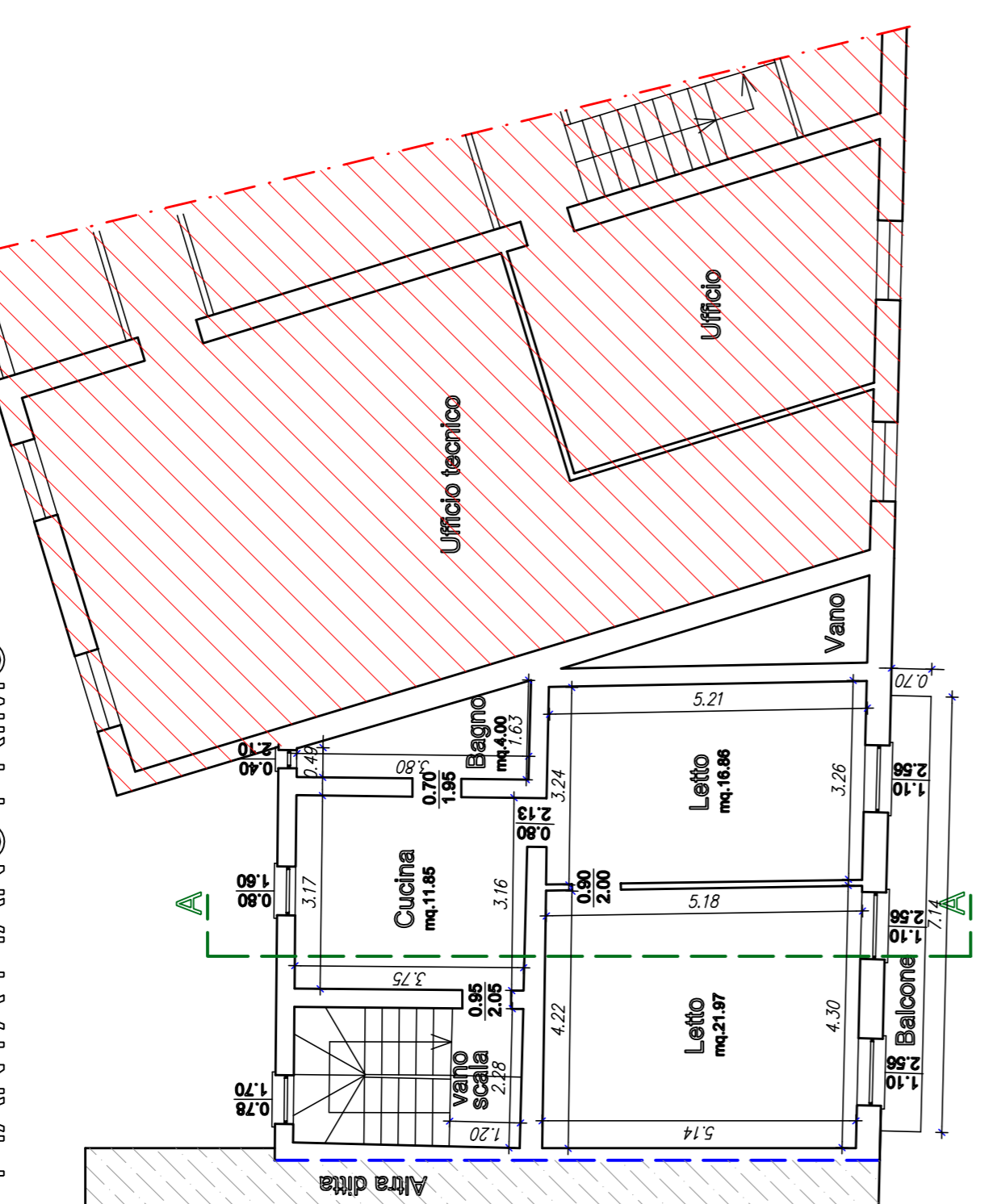
ESTRATTO DI MAPPA  
SCALA 1:1000 FOGLIO 28 M.N.565



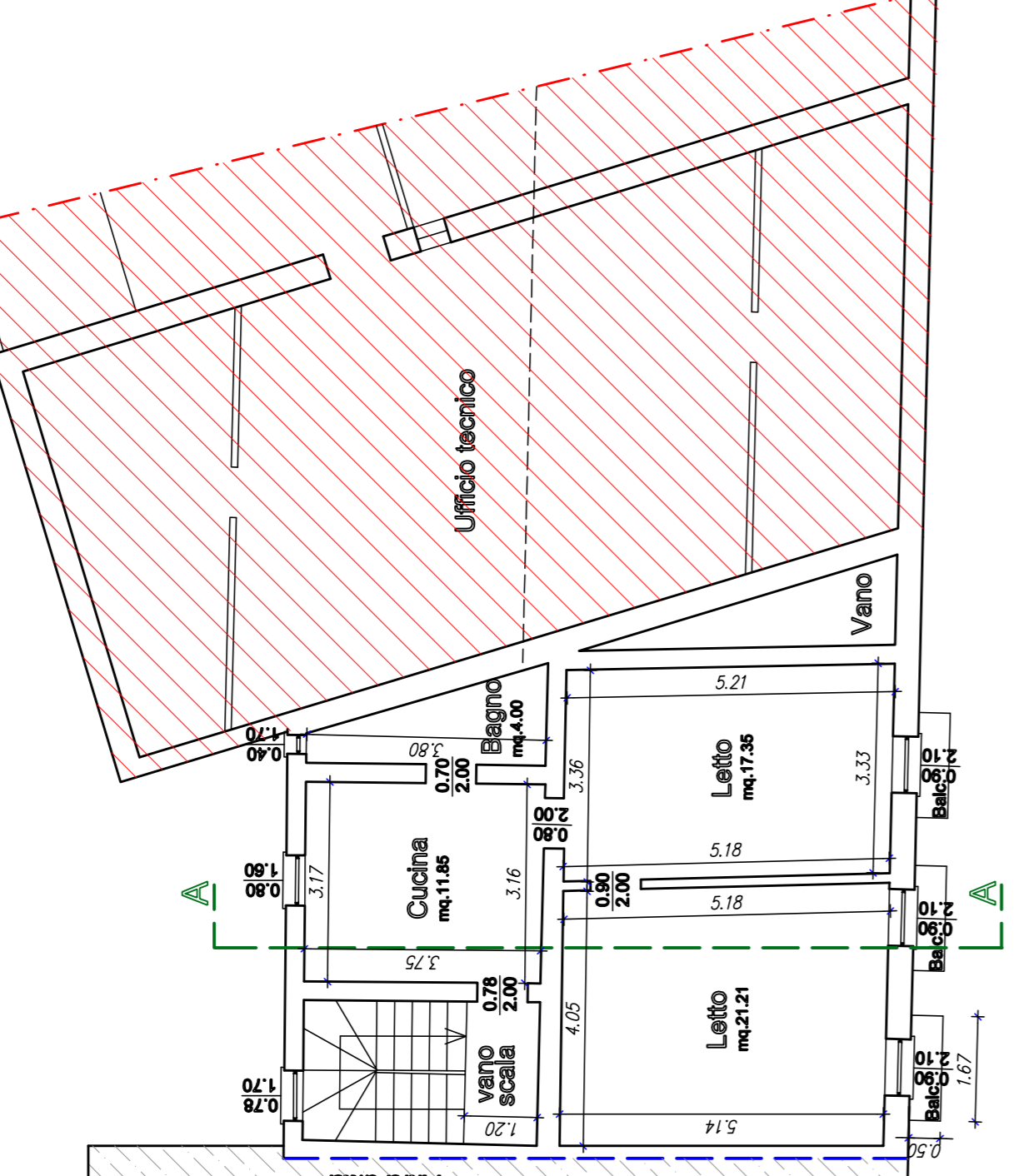
PIANTA PIANO TERRA



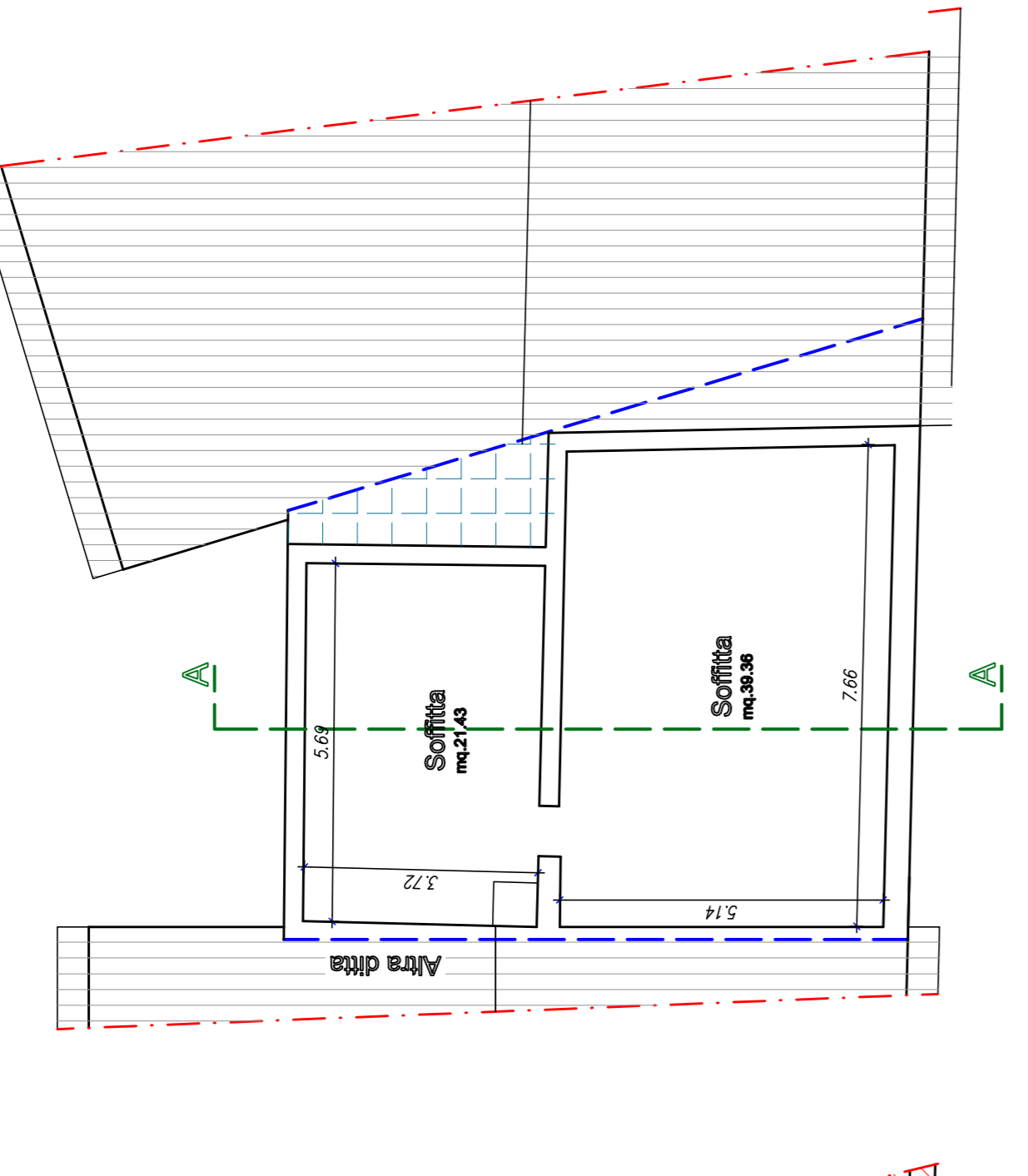
PIANTA PIANO PRIMO



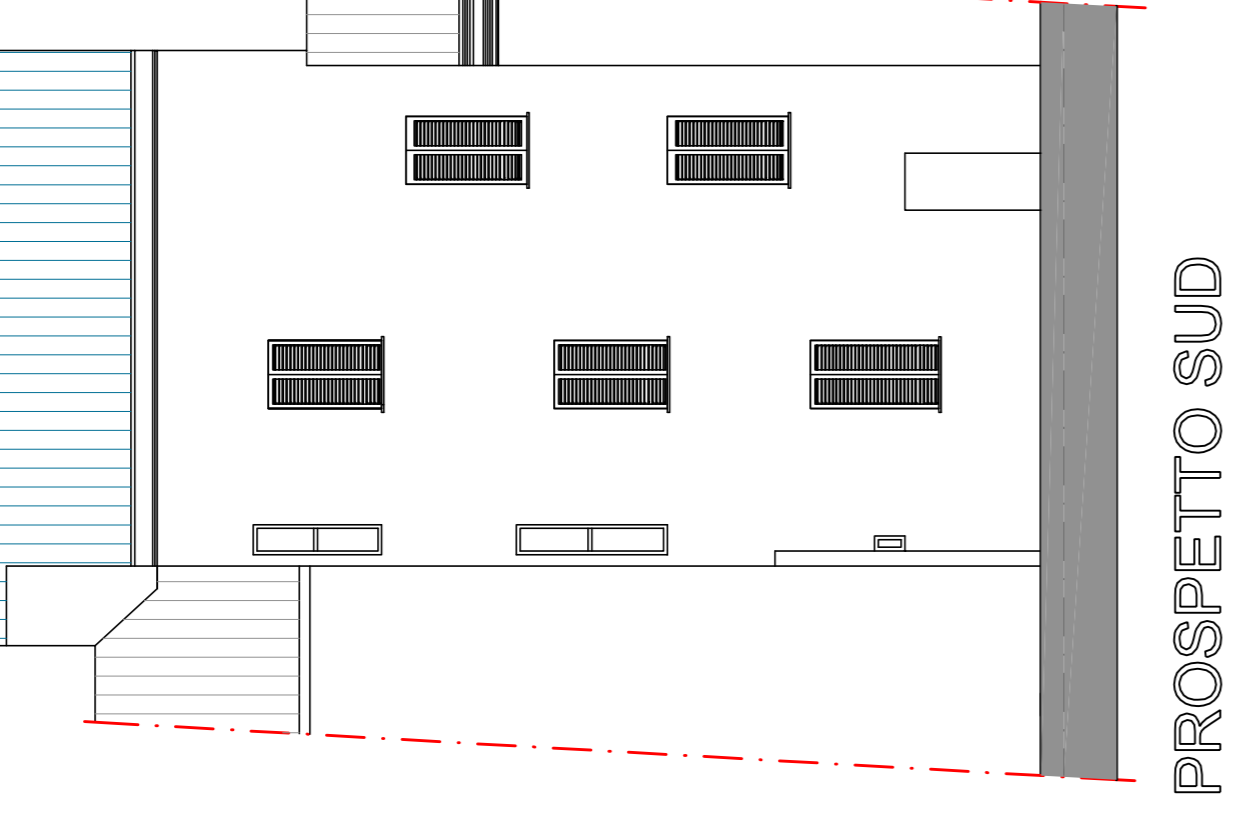
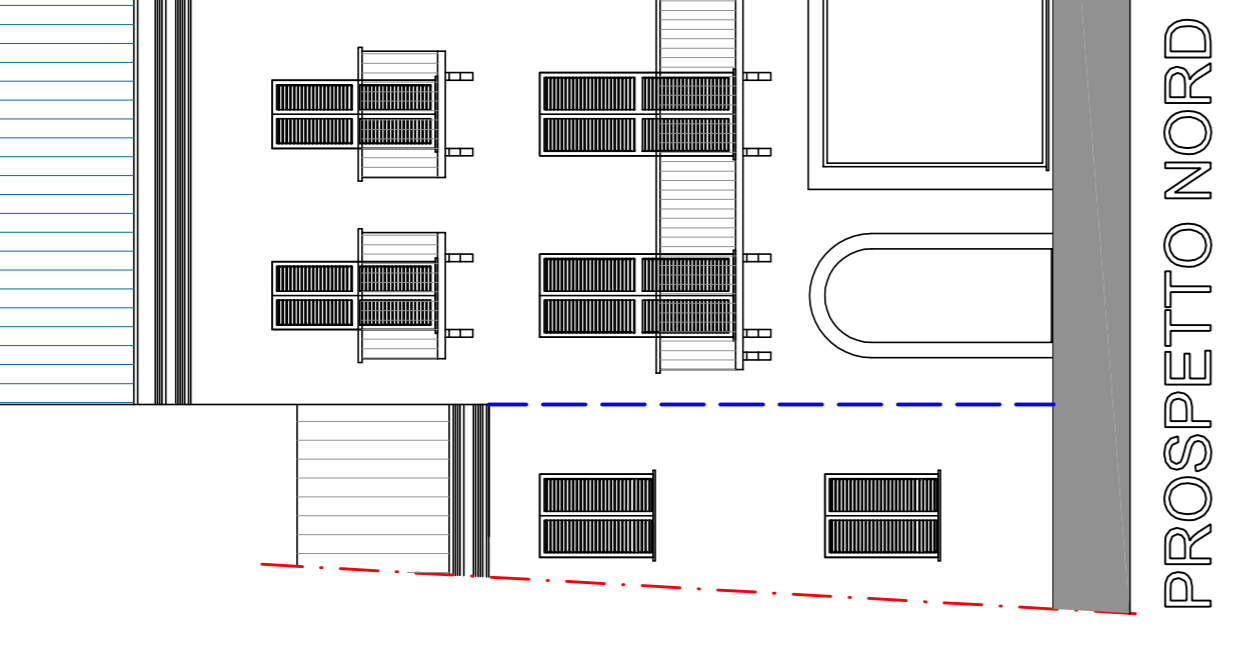
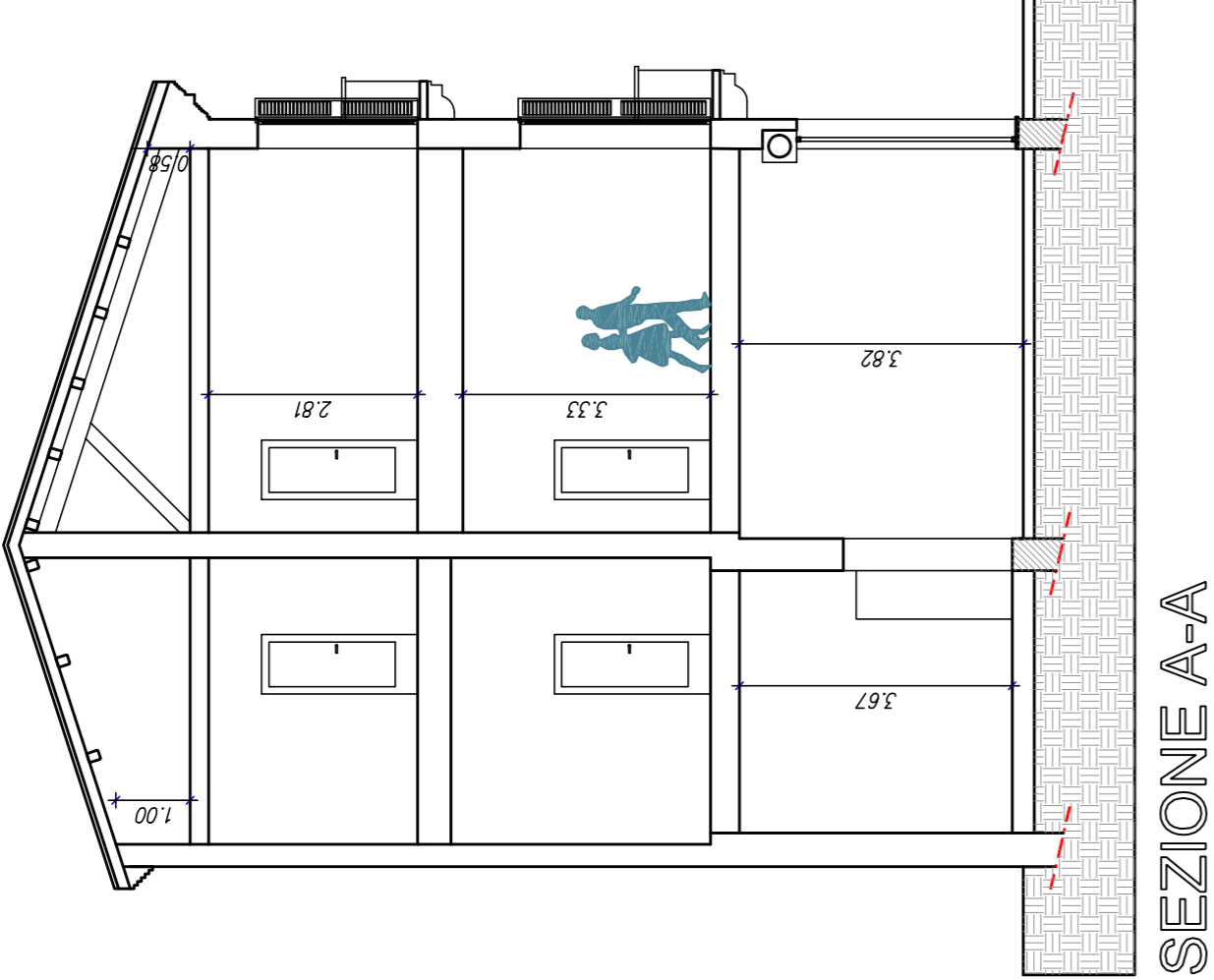
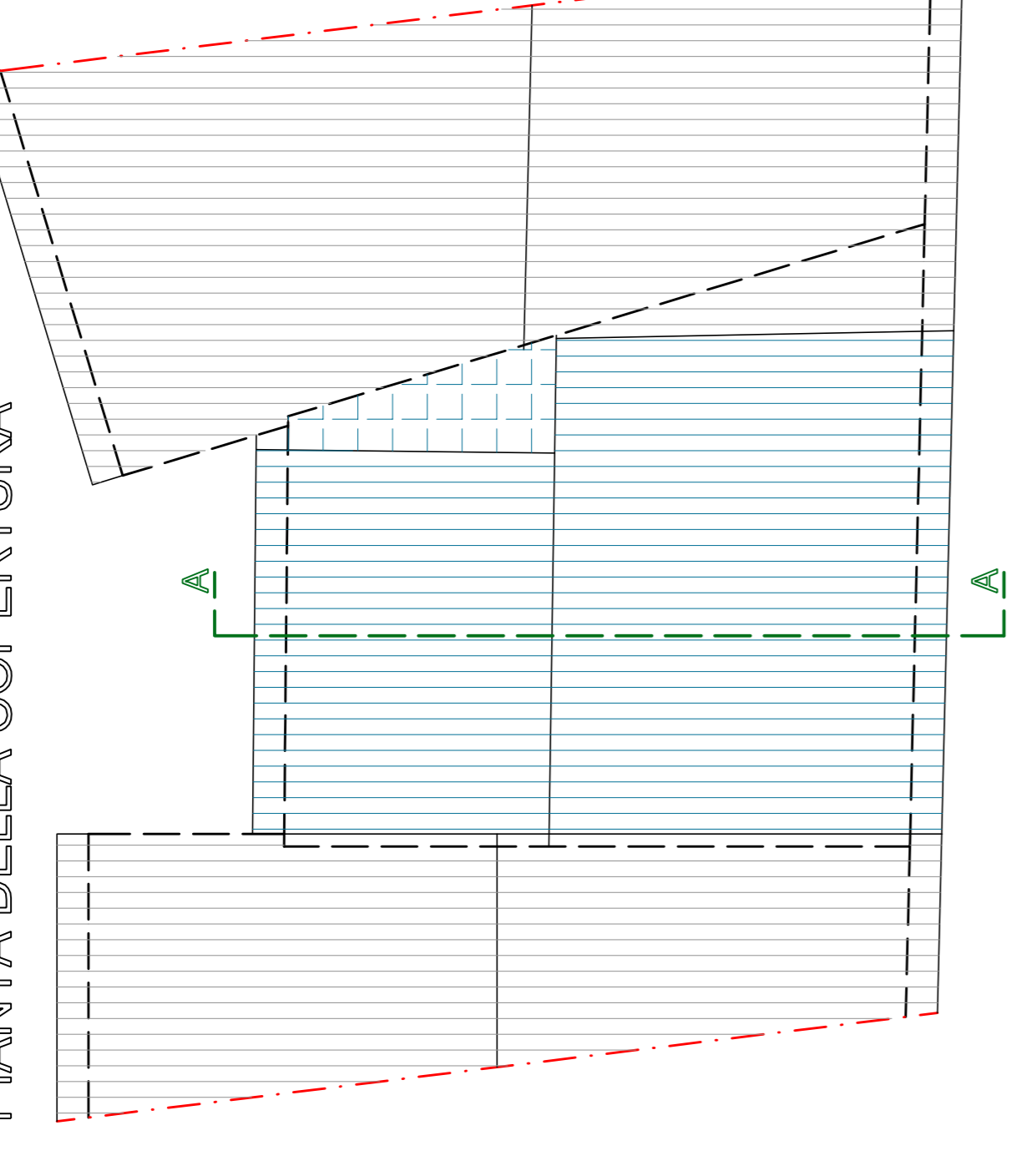
PIANTA PIANO SECONDO



PIANTA PIANO SOTTOTETTO



PIANTA DELLA COPERTURA



COMUNE DI ARIANO NEL POLESINE

PROVINCIA DI ROVERO

**PROGETTO**  
RECUPERO E RISTRUTTURAZIONE EDIFICIO DA  
DESTINARE A SEDE DELLA POLIZIA MUNICIPALE  
PROGETTO ESECUTIVO

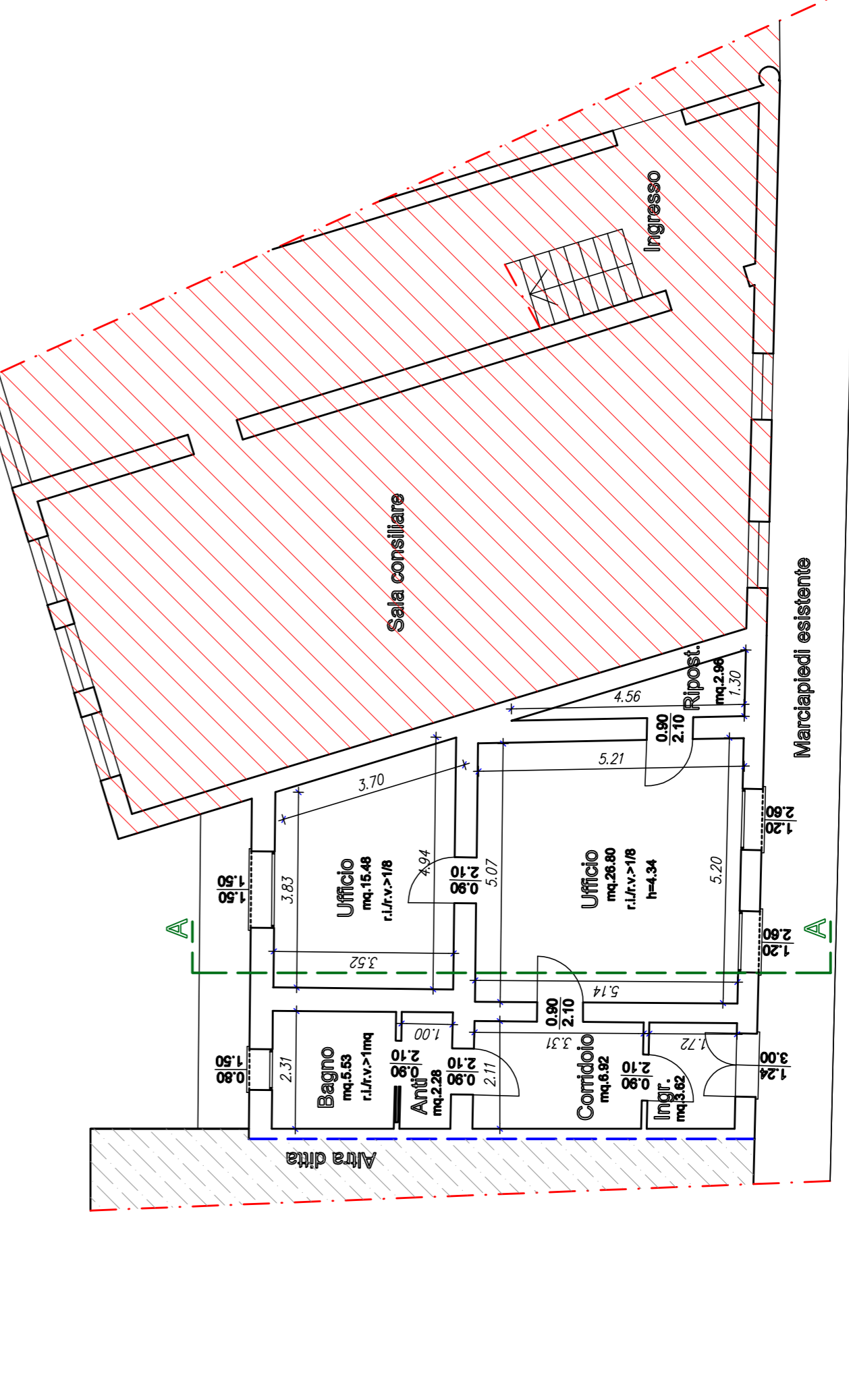
TAV. N.°	1
REV. N.°	0
SCALA	1:100
DATA	18/02/14
UBICAZIONE	Via Mellacodi 6 - 45012 Ariano nel Polesine (RO)
PROPRIETA'	COMUNE DI ARIANO NEL POLESINE Piazza Garibaldi - 45012 Ariano nel Polesine (RO)

Il Tecnico \_\_\_\_\_  
La Proprietà \_\_\_\_\_

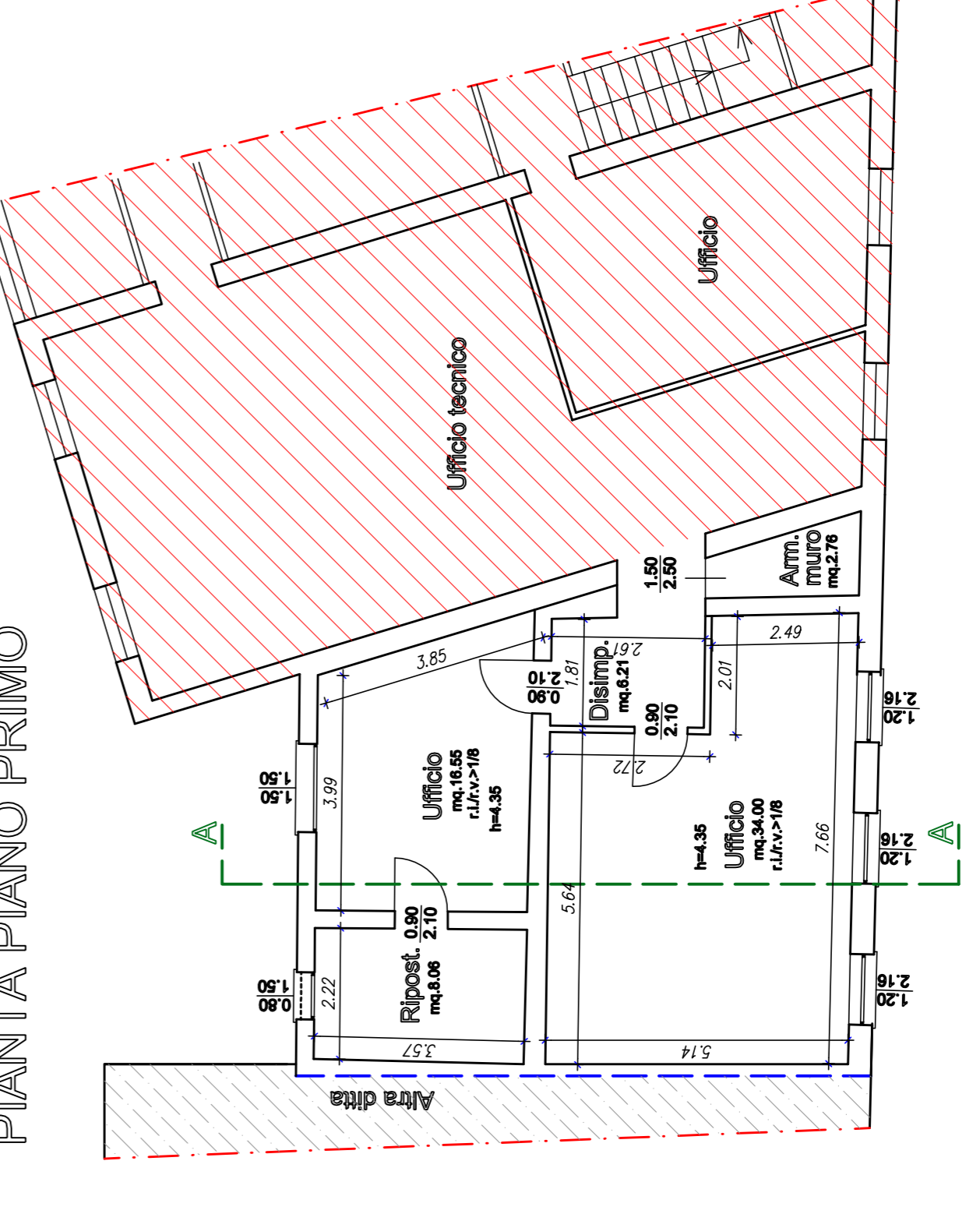
**Studio tecnico Pavani geom. Vincenzo**  
Piazza Garibaldi n° 15 - 44028 Ariano Ferrarese (FE) - Telefono e fax 0535 997016 - Cell. +39 328 915802

STATO DI PROGETTO

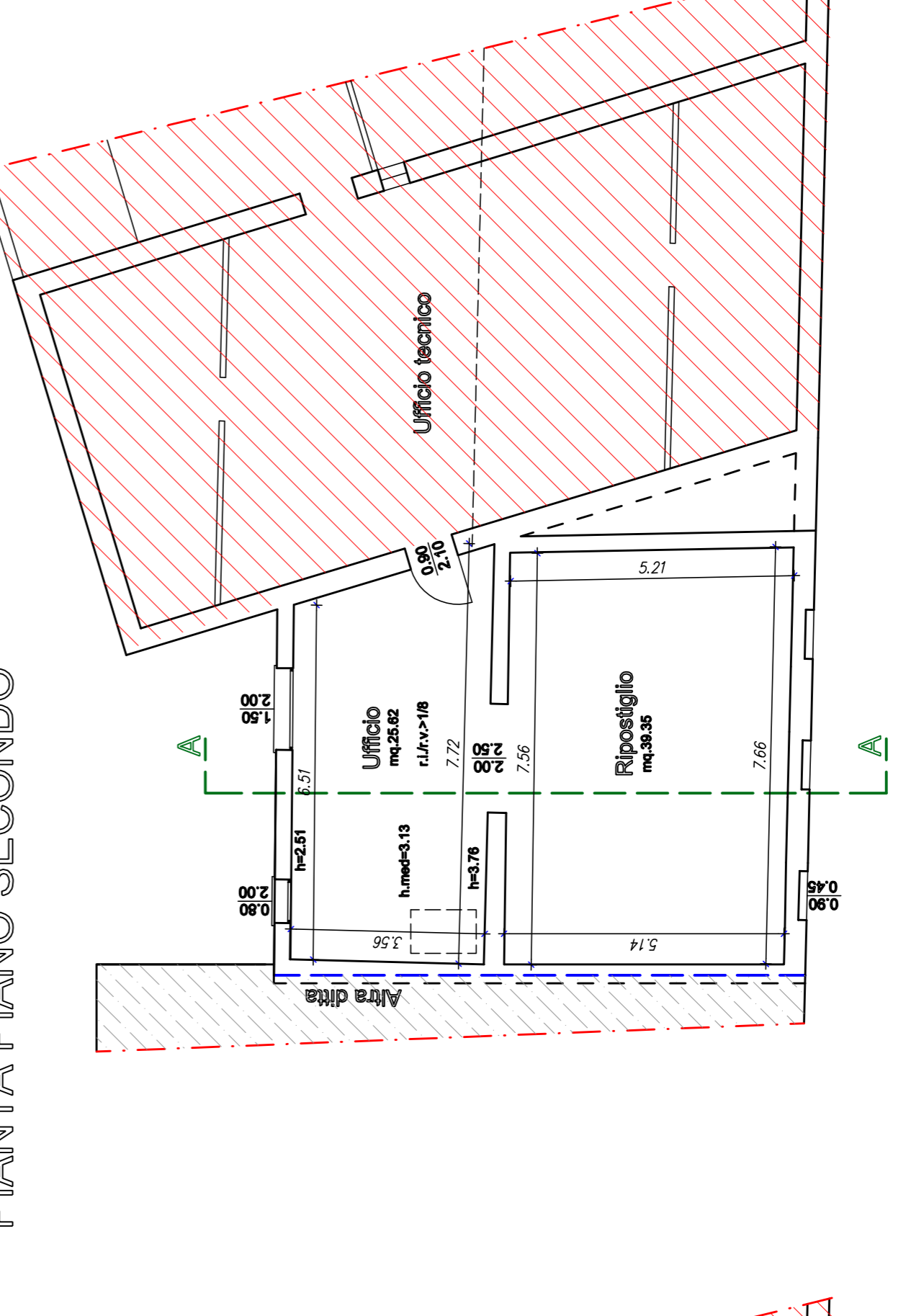
PIANTA PIANO TERRA



PIANTA PIANO PRIMO



PIANTA PIANO SECONDO



PIANTA DELLA COPERTURA

